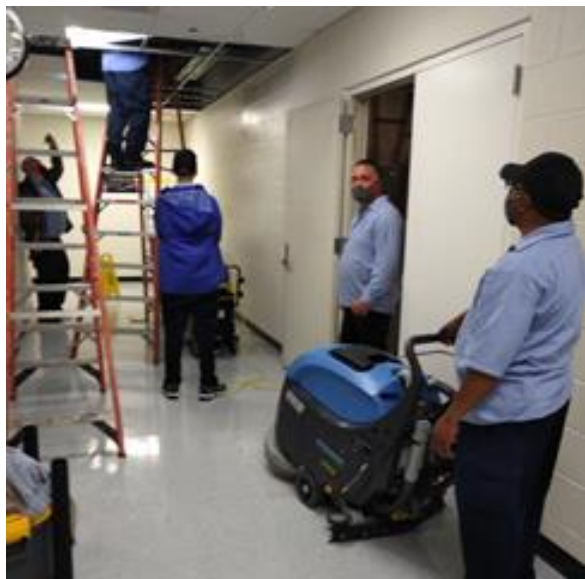


*The Covid-19 pandemic has had a tremendous impact on our campus and community. The people of UK Facilities Management remain the “boots on the ground” for UK, providing the essential services needed to keep our campus safe, secure, and positioned to respond to the evolving crisis. The strength each of you demonstrate daily is inspiring and represents such courage and compassion. We are in this together and we will get through it together. **Thank you for everything you do.** – Mary Vosevich, Vice President for Facilities Management*

OUR PEOPLE.

OUR STORIES.



On Tuesday, May 4, Custodial Supervisor **Kevin Bolden** received a request from Matt Wigglesworth to report to the basement level of the ASTeCC Building. Upon arrival, **Kevin** and Custodian **Desire Lumona** (far right in picture) discovered water streaming out of the ceiling from the roof's drainpipe. Thanks to Mr. Lumona's quick reaction, the pair were able to prevent significant water from entering a mechanical room and flowing further down the hallway. The cleanup started before 8:00 am and lasted until 10:45 am. Plumbing shop and Area 4 Maintenance Teams also responded. Kevin added,

“Great Job Desire for your quick response and having the knowledge (to) pull the best equipment (from nearby)!”

OPEN ENROLLMENT FOR UK BENEFITS - APRIL 28-MAY 14



Open enrollment is your once-a-year opportunity to make certain benefits changes. It's the only time all employees can change health insurance, re-enroll in flexible spending accounts, and add more coverage from our benefits package. That's three decisions — only if you want to make them. Changes made during Open Enrollment will be in effect July 1, 2021 - June 30, 2022. To learn more visit <https://www.uky.edu/hr/event/benefits-open-enrollment>. Changes can be made online and paper forms are available if preferred. If you need assistance with accessing or printing the paper forms please notify your supervisor.

University of Kentucky DEI Campus and Multicultural Space Survey

Every student, staff member, faculty member, and beyond, experiences campus spaces from their own unique perspective.

We'd like to know... what's your experience?

Scan the QR code below to participate in an interactive mapping tool of the main campus. Tell us about where you spend time today and what multicultural spaces you'd like to see in the future!

Scan here to take the interactive survey today!

