

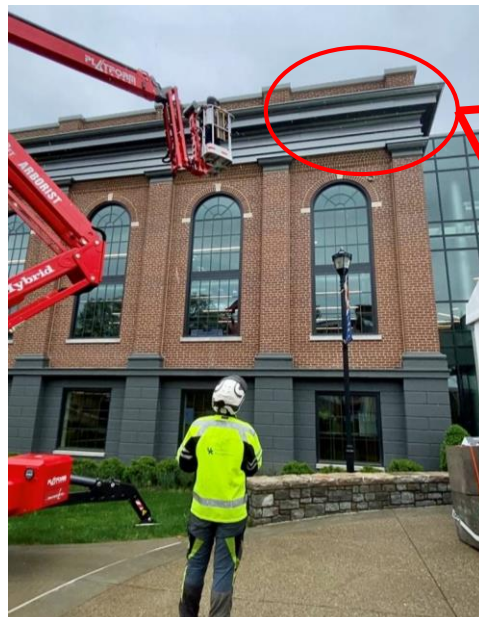
*The Covid-19 pandemic has had a tremendous impact on our campus and community. The people of UK Facilities Management remain the “boots on the ground” for UK, providing the essential services needed to keep our campus safe, secure, and positioned to respond to the evolving crisis. The strength each of you demonstrate daily is inspiring and represents such courage and compassion. We are in this together and we will get through it together. **Thank you for everything you do.** – Mary Vosevich, Vice President for Facilities Management*

OUR PEOPLE. ————— OUR STORIES.

UnBEElievable



Facilities Management teams and campus partners are working a unique and ongoing situation involving honey bees at the Gatton Student Center. **The Delta Room** received a call late in the day on Tuesday about bees in one of the windows in the Alumni Gym area of the building (left). Second shift **Area 1 tech Kevin Ransdell** responded and also notified **UK Trucking** because they oversee FM’s critter management efforts and contracts. **Rick Bessin**, an entomologist and bee specialist with **UK’s Cooperative Extension Service** also responded and live-captured several thousand bees overnight for relocation. On Wednesday, our efforts to address the situation focused on determining how the bees were entering the building. **Area 1 Manager Krishna Hobbs** helped coordinate these efforts which included sending **Area 1 maintenance tech Ryan Dennis** up in lifts inside and outside the building (below left and center). **Jason Swartz** with UK’s **Arborist team** brought in their Spider Lift (below center) to assist with investigating the exterior of the building. Using photographs included with construction documentation, **Krishna** identified voids in the masonry behind the cornice trim work as a potential location of the hive (below right) and we are working with the architect for the Student Center Expansion to identify additional design details that may assist in our work to seal off any penetrations in this area that are allowing the bees to access the interior.



WEAR A MASK



WASH YOUR HANDS



PHYSICAL DISTANCE



DAILY SCREENING