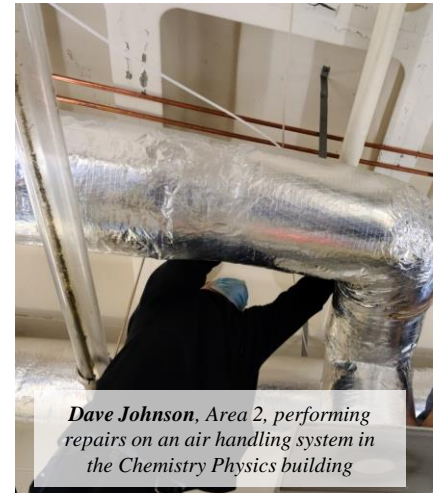


*The Covid-19 pandemic has had a tremendous impact on our campus and community. The people of UK Facilities Management remain the “boots on the ground” for UK, providing the essential services needed to keep our campus safe, secure, and positioned to respond to the evolving crisis. The strength each of you demonstrate daily is inspiring and represents such courage and compassion. We are in this together and we will get through it together. **Thank you for everything you do.** – Mary Vosevich, Vice President for Facilities Management*

## OUR PEOPLE. ————— OUR STORIES.

In our newsletter [Monday](#), we introduced the six work streams that Facilities Management has assembled to lead the implementation of the changes needed to reopen our campus to in-person education as safely as possible. We are taking a deeper look at the scope of work for each of these teams. Today’s focus is the **Building Systems and Utilities team**. This team is working to ensure indoor air and water quality meet the highest standards. The group is also developing streamlined ways of communicating the steps we are taking on these fronts to the campus community. The work includes evaluating air filtration systems and schedules, flushing schedules to protect against stagnant water, and turning off water fountains while keeping bottle filling stations operational. Team leads are **Xavier Rivera Marzan (UEM)** and **Harold Sandford (Maintenance)**. Team members are **Bobby Tincher** and **Britney Ragland (UEM)**, **Paul Ducharme (MCPD)**, **Phil Tackett (Maintenance)**, **Jessica Freeman (FIS)**, and **Shane Tedder (Sustainability)**.



*Dave Johnson, Area 2, performing repairs on an air handling system in the Chemistry Physics building*



*This statue near Kroger Field depicts UK's first African-American football players Greg Page, Nate Northington, Wilbur Hackett and Houston Hogg.*

On Monday, President Capilouto announced the next steps that the University of Kentucky will take toward racial reconciliation, equity, and inclusivity. He noted, “We have made progress as an institution. But we must recognize that it has not been enough, not if equity and inclusion are truly our goals and aspirations for this community.” Toward these ends, the University is forming a Diversity, Equity, and Inclusion (DEI) Implementation Plan. If you are interested in contributing to this effort, or know a co-worker who would be, you are encouraged to complete [this nomination form](#) by 5pm on Thursday, July 9. Facilities Management is one of the most diverse units on campus and we hope to have multiple members of our team directly participating in this important effort.



**Wayback Wednesday** – In this week’s look back at the history of our Facilities we feature Ingels Hall. Relatively new (2005), but named for historic UK alumna, Margaret Ingels, this hall was one of the last residence halls UK constructed before we entered the public private partnership that led to the construction of 14 residence halls in just five years. It is also home to the very successful Engineering Living Learning Community. The hall is named for Margaret Ingels, who became the first female to receive an engineering degree from UK in 1916 and the only second female in the US to accomplish this feat. Ingels went on to perfect the sling micrometer and develop the equation for “effective temperature” in residential air conditioning.



*Margaret Ingels BSME 1916, MSME 1920*



## Photo Friday– Summer Cruising – Submit your photos!

This week’s Photo Friday will feature the vehicles of a nostalgic summer tradition from a simpler time: cruising. Submit photos of a car that you or your family have owned that means a lot to you. It could be the first one you ever rode in, the first one you drove, or simply your favorite. Include a short description of why it is important to you. Submit your photos by midnight on Thursday, July 9 to [shane.tedder@uky.edu](mailto:shane.tedder@uky.edu). At left, Carlos Cooper’s 1965 Chevy Impala. This week’s collage was Carlos’s suggestion.