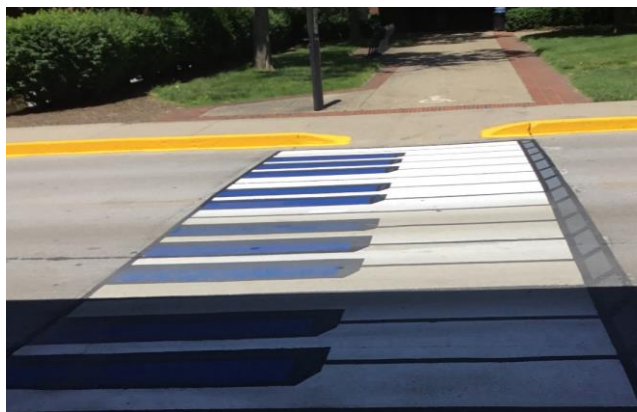


**OUR PEOPLE. ————— OUR STORY.**

*The Covid-19 pandemic has had a tremendous impact on our campus and community. The people of UK Facilities Management remain the “boots on the ground” for UK, providing the essential services needed to keep our campus safe, secure, and positioned to respond to the evolving crisis. The strength each of you demonstrate daily is inspiring and represents such courage and compassion. We are in this together and we will get through it together. **Thank you for everything you do.** — Mary Vosevich, Vice President for Facilities Management*



Yesterday, the comment period for the University’s second status report, titled Reinvented Normal, closed. The report is available to review here: <https://www.uky.edu/coronavirus/campus-restart/status-reports>. It compiles the work and recommendations of 16 teams that have been working on various aspects of how we can reopen our campus to our students in the fall. There will continue to be extensive changes in how we do things, including how we eat on campus. Last week **Scott Hogue, David Tyler** and **Steve Drury** (left) were enjoying lunch while social distancing at the Student Center. They wisely chose to sit one to a table. As we move forward, UK dining is exploring how best to serve meals to the UK community and likely will include many ‘to go’ meals. We should be hearing more about this in the near future. But for now, thanks **Scott, David** and **Steve** for setting a great example!.



The University’s first “art crossing” is complete. The unnamed work of walkable art, located on Patterson Drive between Fine Arts and the Singletary Center, was designed by faculty in the College of Fine Arts, reviewed and approved by appropriate campus stakeholders, and painted by **Derek Butler, Clint McMaine** (right), and other talented team members from our paint shop.



**Way Back Wednesday – Chellgren Hall and Cooperstown**

Opened in 2015, Chellgren Hall is named in honor of Paul Chellgren, who among other things was UK’s student body president in 1963 when JFK was killed. Recalling Kennedy’s visit to UK, Chellgren added, “Three years ago last month in front of our administration building then Senator Kennedy made this statement: *‘These are hazardous times, an individual must think of an action (they) may take in relation to the rest of the world.’* Chellgren Hall was built on the site of Cooperstown (originally Cooper Village) which originated in 1945 as a “G.I. City” consisting of 324 prefabricated housing units for married veterans. The prefabricated units were eventually removed and replaced in 1956 by seven graduate and family apartment buildings.

**PHOTO FRIDAY IS COMING!**

**We want your ideas! What should our weekly collage highlight this week?**  
Email your suggestions to [Shane.Tedder@uky.edu](mailto:Shane.Tedder@uky.edu)