

*The Covid-19 pandemic has had a tremendous impact on our campus and community. The people of UK Facilities Management remain the “boots on the ground” for UK, providing the essential services needed to keep our campus safe, secure, and positioned to respond to the evolving crisis. The strength each of you demonstrate daily is inspiring and represents such courage and compassion. We are in this together and we will get through it together. **Thank you for everything you do.** – Mary Vosevich, Vice President for Facilities Management*

OUR PEOPLE.

OUR STORIES.



Winston Cinnamon raking the mulch ring of a tree on the west lawn of the Gatton Student Center

There are more than **12,000** trees on campus. These trees provide beauty, shade, and tremendous ecosystem services like filtering air and water, preventing erosion, and sequestering carbon. This time of year, the trees also provide something else: leaves, lots of leaves. More than **370,000** lbs of leaves to be precise. While deciduous leaves are key components of nutrient cycling in natural forests, the **185** tons of leaves that fall on campus each year pose threats to other campus infrastructure including clogging stormwater systems, smothering turf, staining concrete, and creating slip and fall hazards. For these reasons, **UK Grounds** works hard each year employing a wide variety of tools and techniques (see photos) to collect the annual leaf fall. Once collected, the leaves are transported to LFUCG’s yard waste facility where they are processed into mulch that is available to the community. UK Grounds uses a combination of mulch and compost around campus trees to simulate the nutrient pulse that would have come from the leaves. **THANK YOU TO OUR GROUNDS TEAM FOR TACKLING THIS MASSIVE CHALLENGE EACH YEAR!**



Mowers are to chop and move leaves on campus



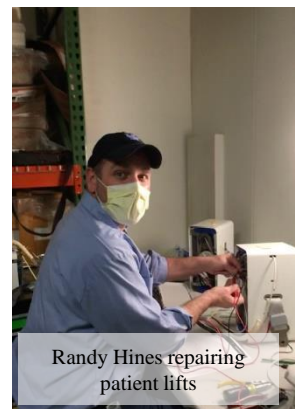
Reusable “leaf burritos” are used to remove leaves from areas inaccessible to large collection equipment



Leaves readied for collection on University Drive

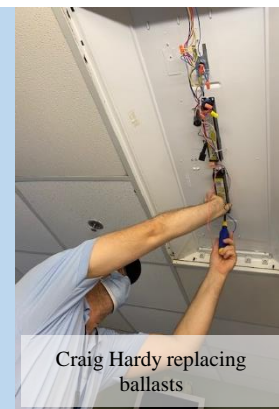


Cory Bake, Tyler Sosby, and Taylor Balko collecting leaves on administration drive using a new leaf vacuum.



Randy Hines repairing patient lifts

The **Rolling Renovation** team at FMMC is a critical component of our preventive maintenance team. This team, led by supervisor **Jeff Kunsman**, visits every patient room, procedure room, and public space throughout the UK Healthcare enterprise on a routine schedule to perform maintenance and ensure the spaces are always at the highest quality for patient care and comfort. As **Jeff** would say, the photos here are small examples of his team getting it done!!



Craig Hardy replacing ballasts



Flumencio Orozco applies fresh paint to an operating room

Photo Friday – REDUCE REUSE RECYCLE

To wrap up our celebration of America Recycles Day and to demonstrate our support for UK’s goal to reuse, recycle, or compost at least 50% of all the waste produced on campus, let’s fill our Friday Photo Collage with pictures of all the ways we reduce, reuse, and recycle. This can be everything from using campus recycling bins, to collecting leaves for mulching, carrying your own water bottle or coffee cup, or snapping a selfie with the cardboard bales at WT Young Library. At left, leaf collection on campus.

