

## OUR PEOPLE. ————— OUR STORY.

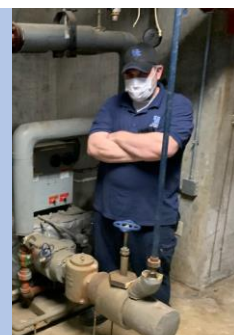
*I hope you all had a safe and restful holiday weekend. As we start the 11<sup>th</sup> week of our response to this virus, I want to say how grateful I am for the dedication, flexibility and creativity that our Facilities Management team is bringing to the work of reinventing normal at the University of Kentucky. The strength each of you demonstrate daily is inspiring and represents such courage and compassion. **Thank you for everything you do.** – Mary Vosevich, Vice President for Facilities Management*



Thanks to you, our Friday blue jean food drive was a huge success! Earlier today, **Beatty London** and **Kenneth Raglin** with **UK Trucking** delivered **more than 500 pounds** to Abby Essinger (left) with UK's Big Blue Pantry. These donations will be available immediately for students facing food insecurity. The Big Blue Pantry is an important component in our efforts to holistically support the well being of our students. At right, **John Gambill** delivers Area 3's contributions.



**Eric Paullin** (left) and **Eric Conner** (right) with UK's **Utilities and Energy Management** team spent time last week doing maintenance and cleaning at Cooling Plant 1. UK uses central utility plants to provide steam and chilled water to heat and cool our facilities. Natural gas and coal-fired boilers are used to produce the steam. Evaporative cooling towers, powered by electricity, are used to produce the chilled water. These utilities are delivered through many miles of underground piping. This district approach to heating and cooling has many benefits including efficiency and redundancy.



**Mark Wiggam**, is **Planning, Design, and Construction's** project manager for the renovation of the Environmental Quality Management Center (EQMC). The renovation will provide UK EQM with much needed office space and a new conference room. The mission of UK's Environmental Quality Department is to provide outstanding service to the research, academic, operational, and healthcare of the University in defining and achieving their goals for environmental compliance and resource conservation. .



**Yesterday was Memorial Day**, a day to commemorate the men and women who **died** while in the military service. Two of our most iconic buildings, **Memorial Hall** and **Memorial Coliseum**, are named in honor of these sacrifices. Memorial Hall was completed in 1929 to honor those who died in World War I. Memorial Coliseum was built as a memorial to Kentuckians who died during World War I, World War II and the Korean War. Later, the names of those who died in the Vietnam War were added to the memorial.



**Heroes do indeed work here.** The way we conduct *our work* and *our daily lives* is critically important to supporting our health professionals as they work to protect our community. **Wearing a mask** is a minor inconvenience compared to the lives it could save. Let's be leaders on campus and in our communities in adopting this practice.

