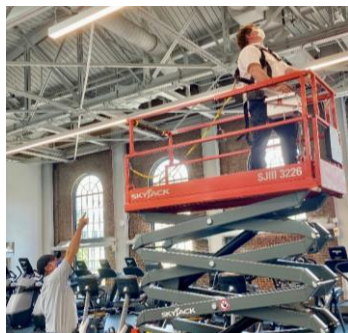


*A newsletter highlighting and connecting the people and work of Facilities Management at the University of Kentucky*

*The Covid-19 pandemic has had a tremendous impact on our campus and community. The people of UK Facilities Management remain the “boots on the ground” for UK, providing the essential services needed to keep our campus safe, secure, and positioned to respond to the evolving crisis. The strength each of you demonstrate daily is inspiring and represents such courage and compassion. We are in this together and we will get through it together. **Thank you for everything you do.** – Mary Vosevich, Vice President for Facilities Management*



**UK EVPFA Eric Monday on UK's Process to 'Reinvent Normal'.** The distinctive residential educational experience provided by the University of Kentucky has attracted thousands of students from across Kentucky, the country and the globe. That experience is critical for the future. This differentiated education will be more necessary than ever to help UK and students meet the ongoing and daunting new challenges our world must now confront. To that end, UK is making plans to open in August for the fall semester. To reach that goal, the university has undertaken a restart process and guiding principles to 'reinvent normal' for the campus community. Multiple teams were formed and asked to draft parallel concept papers for four different restart options. Here are those draft plans, along with a timeline for our restart process: <https://www.uky.edu/coronavirus/concept-plans>. You can also listen to Dr. Monday's podcast on this topic on UK PR's [Behind the Blue](#).



**Six feet is six feet.** Maintaining safe personal space, wearing appropriate personal protective equipment (like masks), and proper hygiene continue to be some of our best tools we have for preventing the spread of covid-19 and protecting those in our community who are most vulnerable. These practices are critically important as we focus our attention on preparing our campus facilities for the new protocols and practices that will be put in place for the fall 2020 Semester. At left, **Area 1** staff demonstrate proper vertical distancing. **Ryan Dennis** (floor) pointed out the location of a faulty duct pressure sensor to **Kenny Moore** (lift) in Alumni Gym during a repair last week.



**Mr. Clopein, please take your seat!** Area 2 Manager, **Todd Thacker**, and FM's **Tree Sandford**, have been having a good time with this picture. At left, **Jack Clopein**, from Area 2, changes out a faulty flush valve in the Jacob's Science Building as our teams continue to ensure campus facilities are safe and ready for action this fall. The good (toilet) humor shown by this group in capturing and sharing this moment is an important part of how we get through this together. Mark Twain once said, *“(Humans) have one really effective weapon—laughter. Power, Money, Persuasion, Supplication, Persecution--these can weaken (a problem) a little, but only Laughter can blow it to rags and atoms at a blast. Against the assault of Laughter nothing can stand.”*.

## Facilities Fact – Storm Water Harvesting

Yesterday, Lexington received more than 3.5 inches of rainfall. This resulted in hundreds of thousands of gallons of water “running off” of campus roofs, roads, and sidewalks. **More than 60,000 gallons of that water was potentially diverted** from Lexington's overburdened storm sewers by harvesting systems installed in recent years under the courtyards of the Jacob's Science Building (right), the Healthy KY Building, and the Gatton Student Center. The harvested water will be used for irrigation.



**SEE BLUE (jeans)  
SEE SERVICE**

This Friday, **Facilities Management**, is joining forces with **THE BIG BLUE PANTRY** to fight student hunger. If you bring a non-perishable food item to donate that day, you can wear blue jeans to work. More details will be provided later in the week and there will be a drive-by option for the folks working remotely to get them out of their pajamas. .