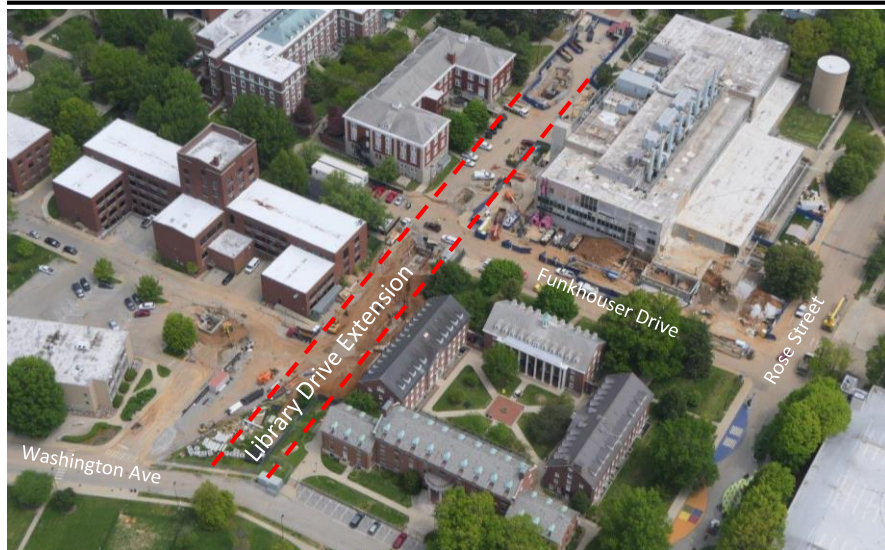


A newsletter highlighting and connecting the people and work of Facilities Management at the University of Kentucky

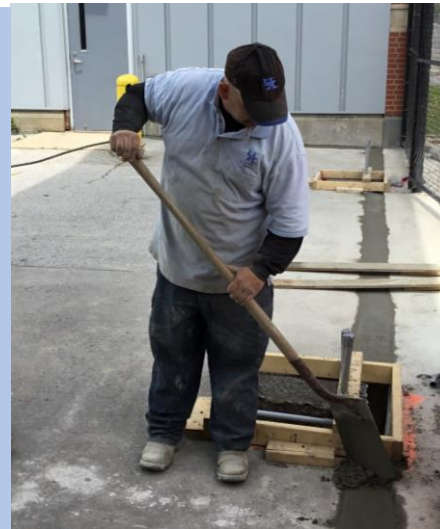
*The Covid-19 pandemic has had a tremendous impact on our campus and community. The people of UK Facilities Management remain the “boots on the ground” for UK, providing the essential services needed to keep our campus safe, secure, and positioned to respond to the evolving crisis. The strength each of you demonstrate daily is inspiring and represents such courage and compassion. We are in this together and we will get through it together. **Thank you for everything you do.** – Mary Vosevich, Vice President for Facilities Management*



Utilities and Energy Management and **Capital Projects Management** are working closely together on a large-scale project to extend Library Drive from Funkhouser Drive to Washington Avenue, and eventually to Huguelet. This is an important piece in our work to develop the vehicular circulation infrastructure needed to permanently close a portion of Rose Street. We are also taking this opportunity to install and upgrade underground utilities in this area. The new utility infrastructure will ensure more efficient and reliable service to existing facilities and provide the capacity needed to expand in this important area of campus.



Last week, **Curtis Crump** (left) and **Stuart Leasor** (right), from CPPD **Central Shops**, cut a trench to install conduit for new automatic gates at the Central Utilities Plant. This is part of ongoing work that **Utilities and Energy Management** is leading to improve conditions for accessing our central plants to safeguard our capacity and deliver uninterrupted electricity, chilled water, steam, domestic water, and sewer services to campus facilities.



Faces of Facilities – Burt Taylor

Burt has been an important team member for **Custodial Services** for a remarkable 42 years. He is a native of Lexington and has been married for 30 years. He and his wife have twin girls and one grandchild. Regarding our current situation, he has a lot of respect for UK’s response to the Covid-19 outbreak. He is grateful that he was part of a team of essential employees and that UK was behind him. He is also glad that the personal protective equipment didn't run out of stock and that we are using effective, safe cleaning and disinfecting products.

Face Mask
Fashion

This week, as certain sectors of KY’s economy will begin to reopen. As we embark on this challenge, we must remain vigilant. One of the easiest ways to protect yourself and others is to wear a mask when in public. In honor of this, our **Friday Photo Collage** will feature your face mask fashion. Submit your photos to shane.tedder@uky.edu.

REMEMBER TODAY IS THE LAST DAY TO SUBMIT YOUR PHOTO.